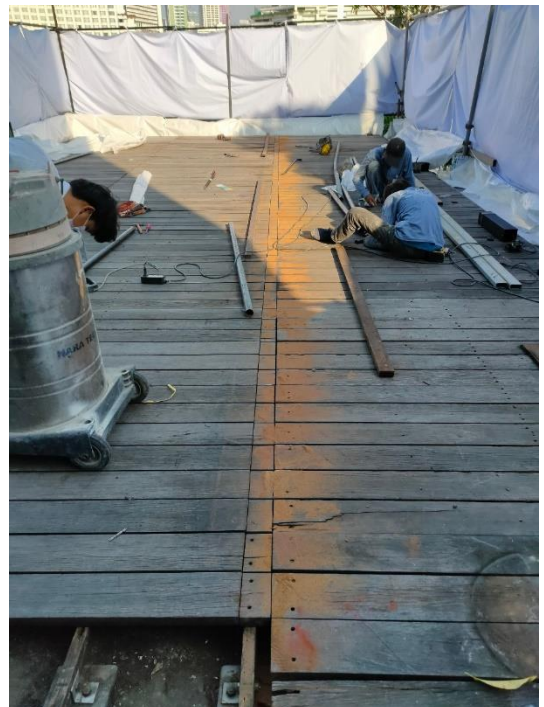
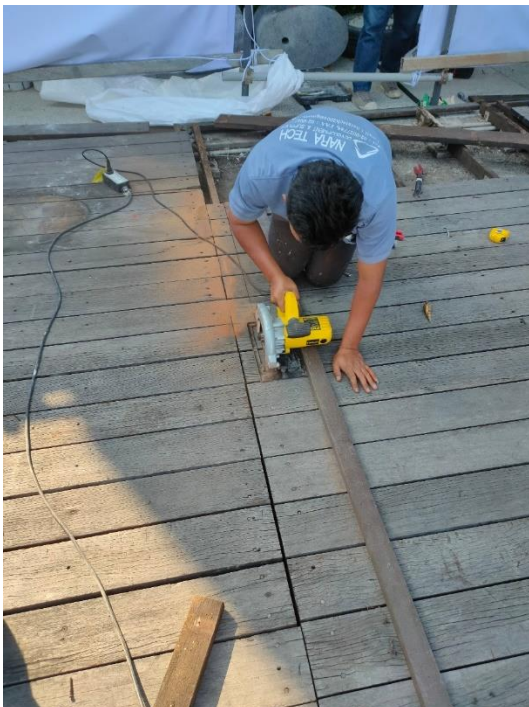
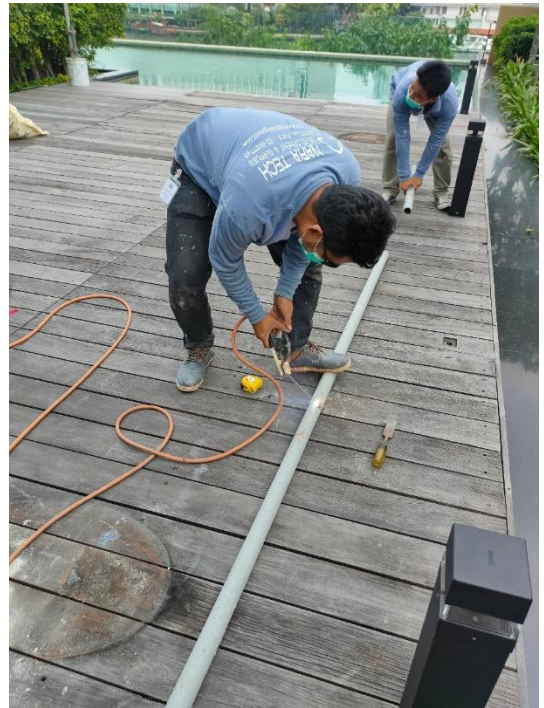
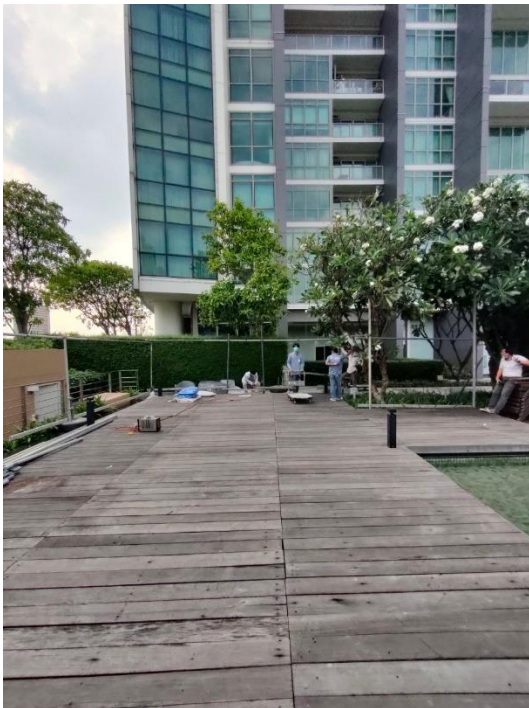


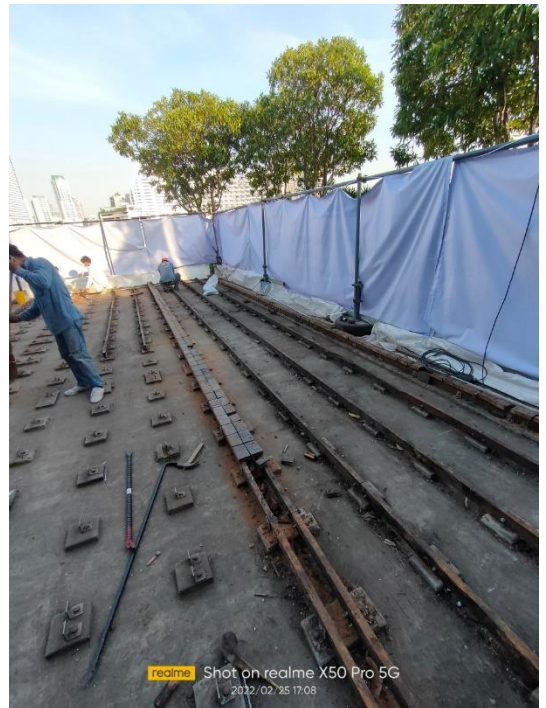
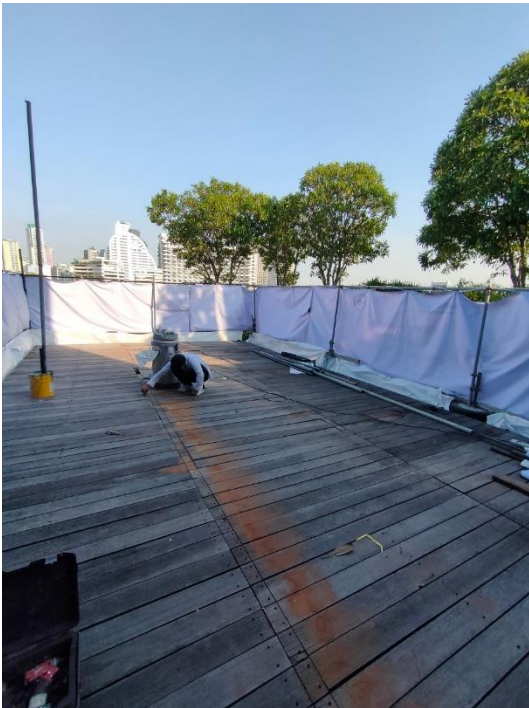
Replacement of wooden support and wood plank refurbishment (WT1)
River Pool
The River Condominium

Zone 1



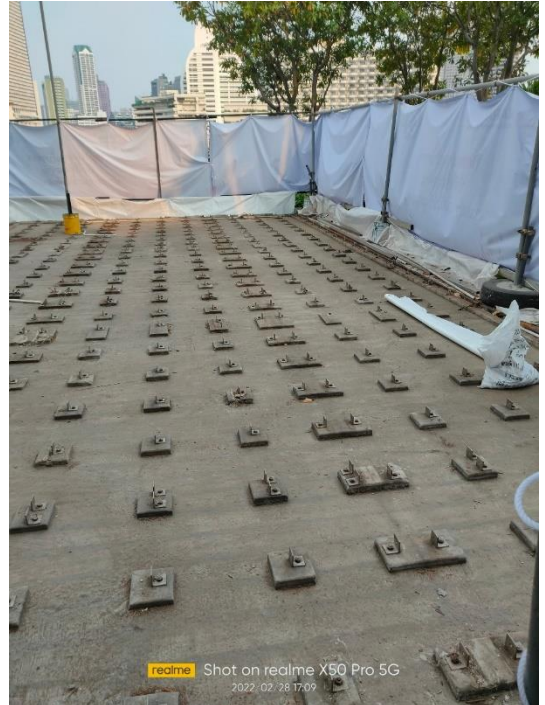
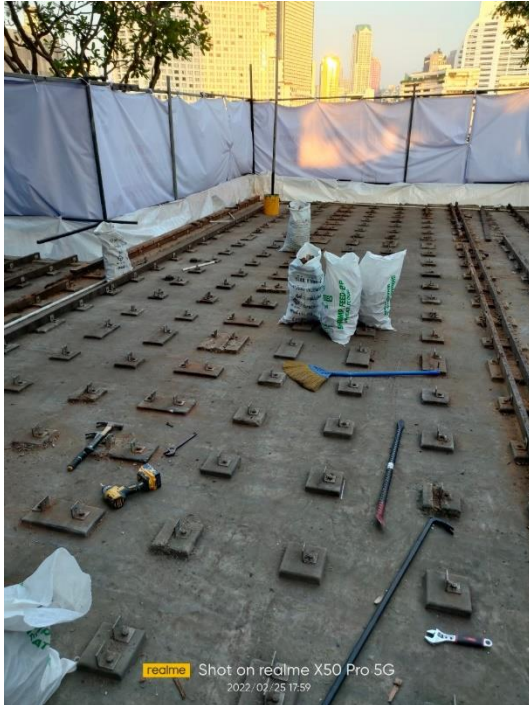
Replacement of wooden support and wood plank refurbishment (WT1)
River Pool
The River Condominium

Zone 1



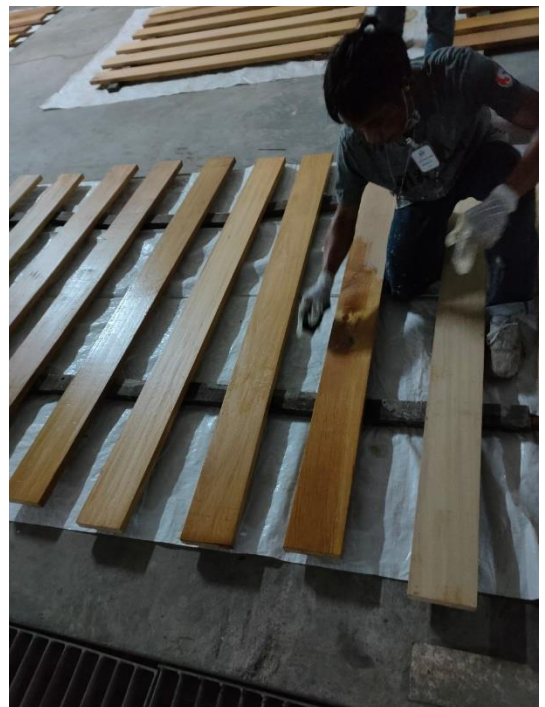
Replacement of wooden support and wood plank refurbishment (WT1)
River Pool
The River Condominium

Zone 1



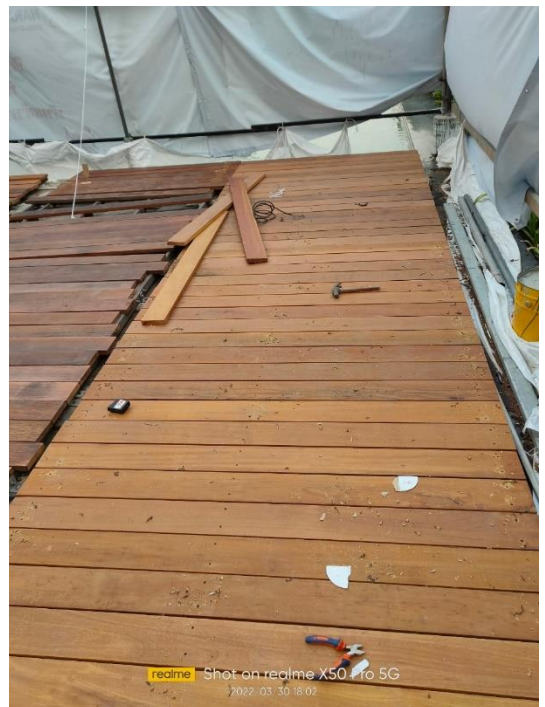
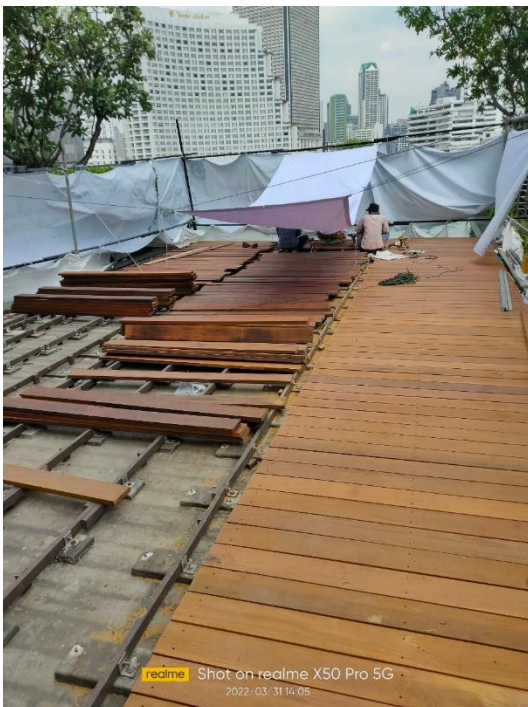
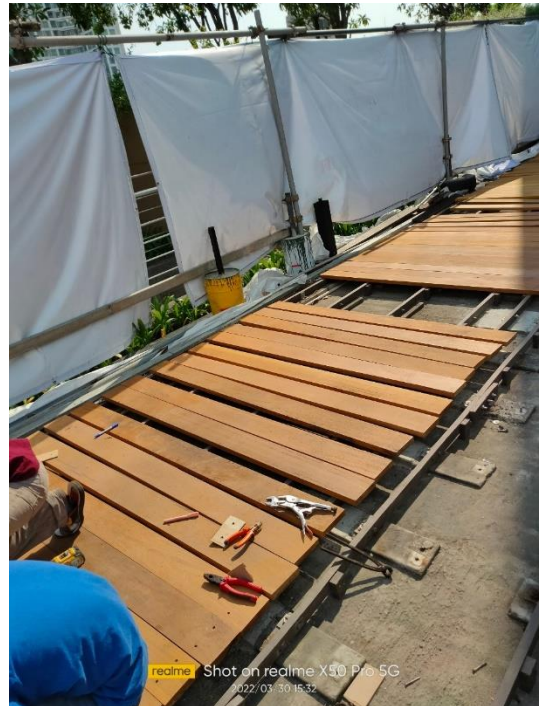
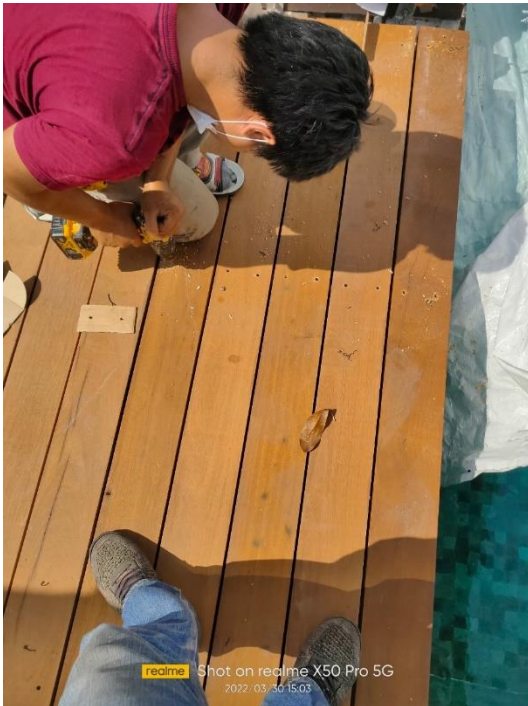
Replacement of wooden support and wood plank refurbishment (WT1)
River Pool
The River Condominium

Zone 1



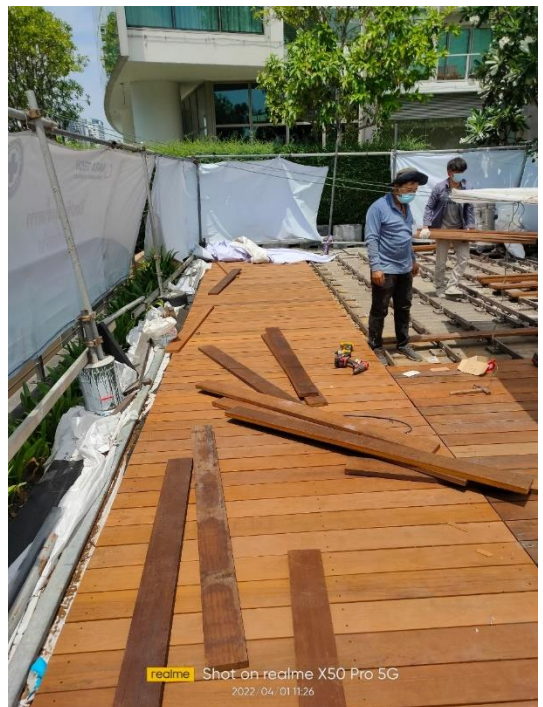
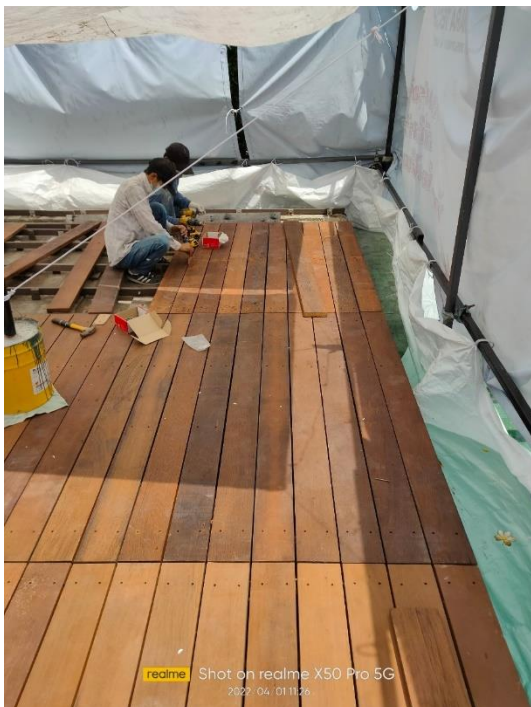
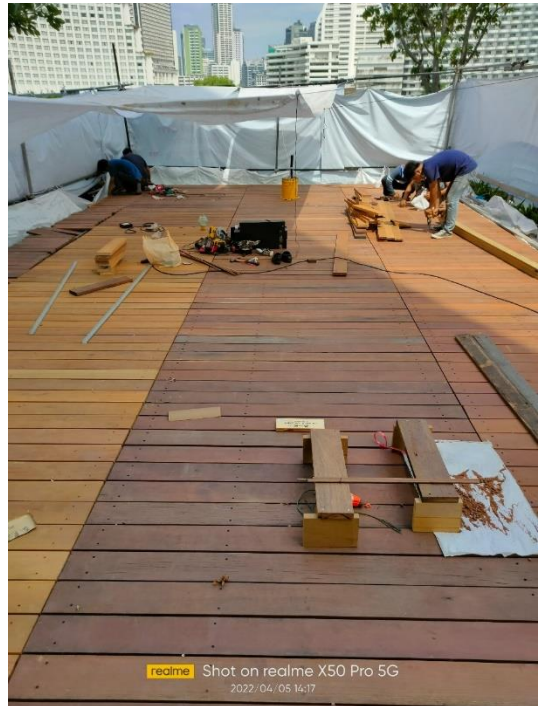
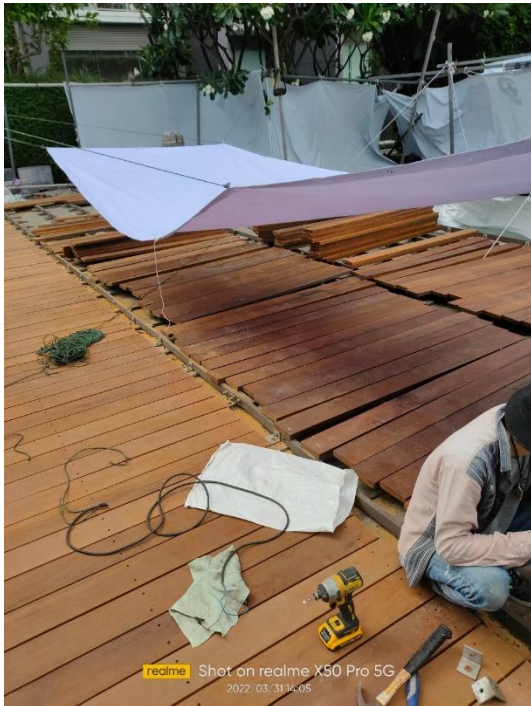
Replacement of wooden support and wood plank refurbishment (WT1)
River Pool
The River Condominium

Zone 1



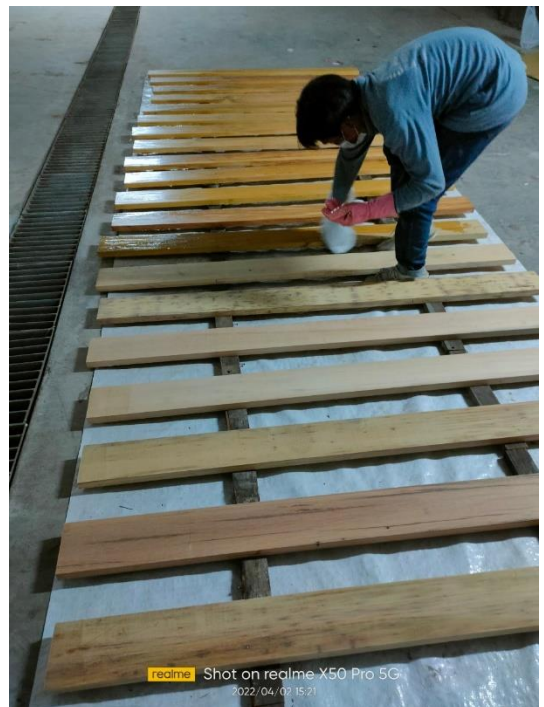
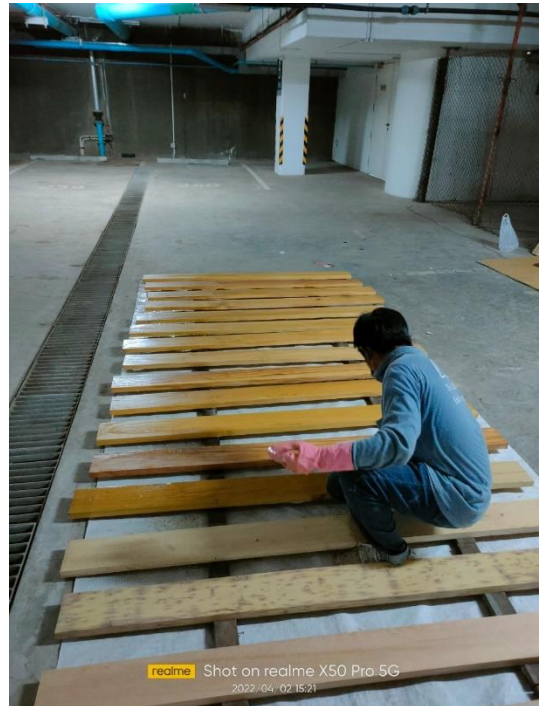
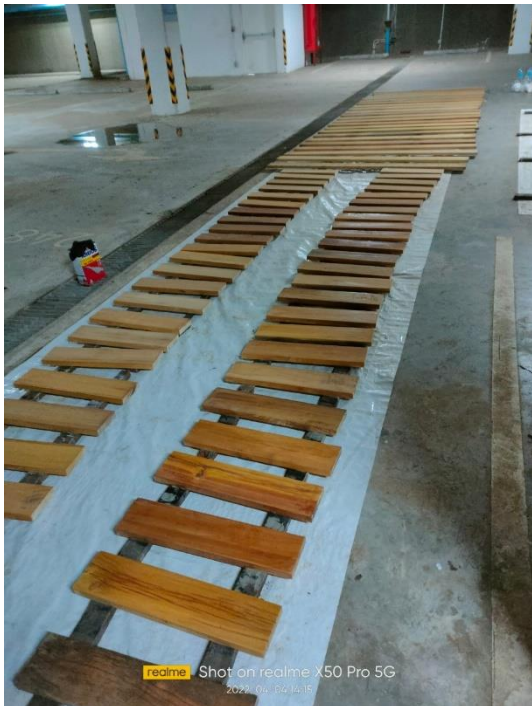
Replacement of wooden support and wood plank refurbishment (WT1)
River Pool
The River Condominium

Zone 1



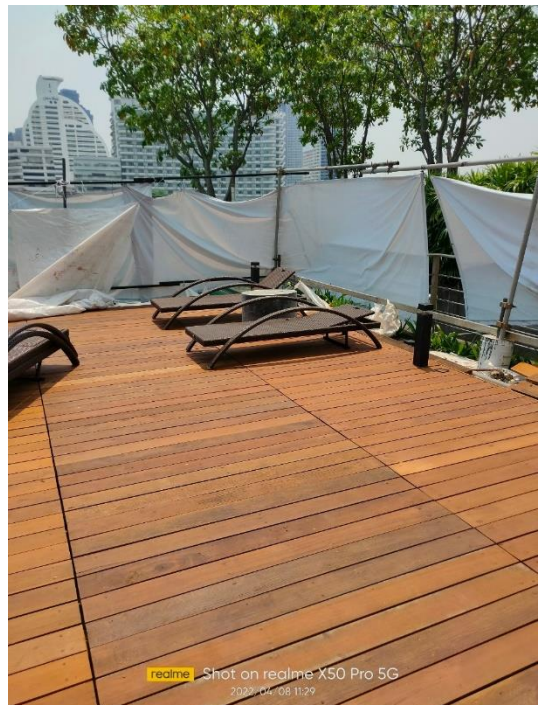
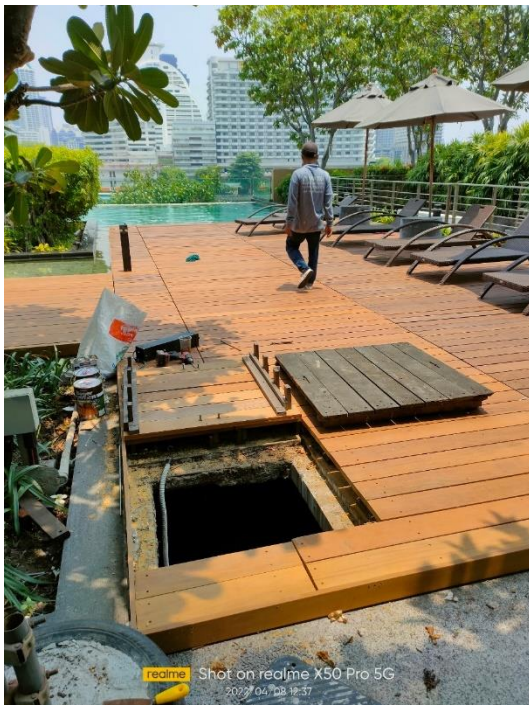
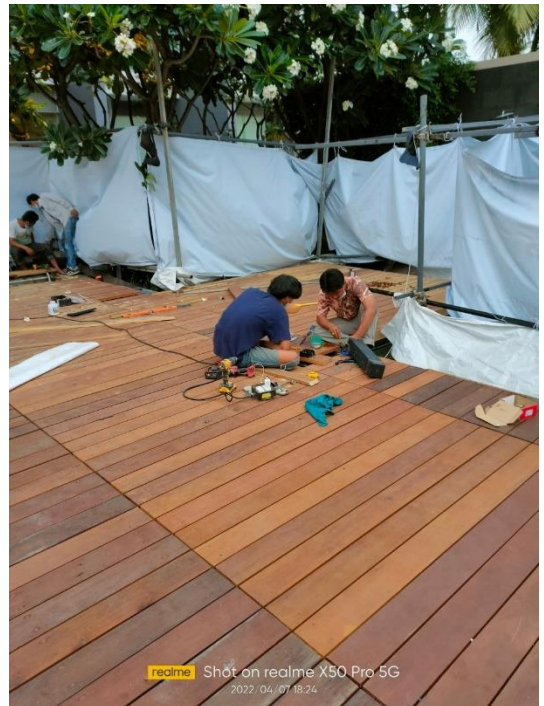
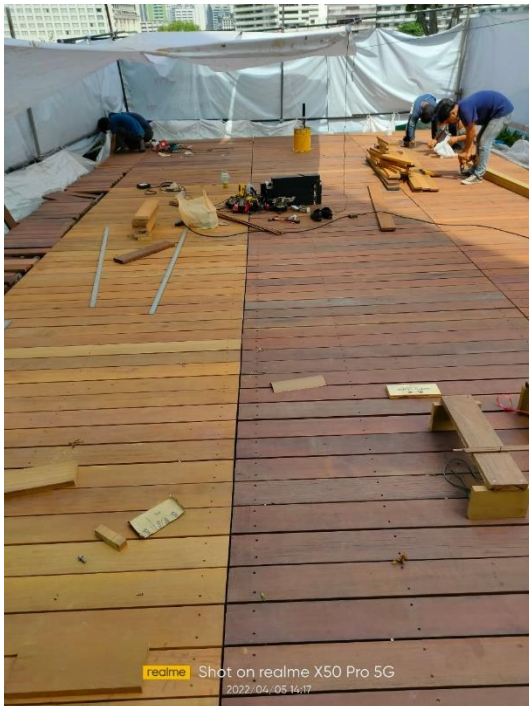
Replacement of wooden support and wood plank refurbishment (WT1)
River Pool
The River Condominium

Zone 1



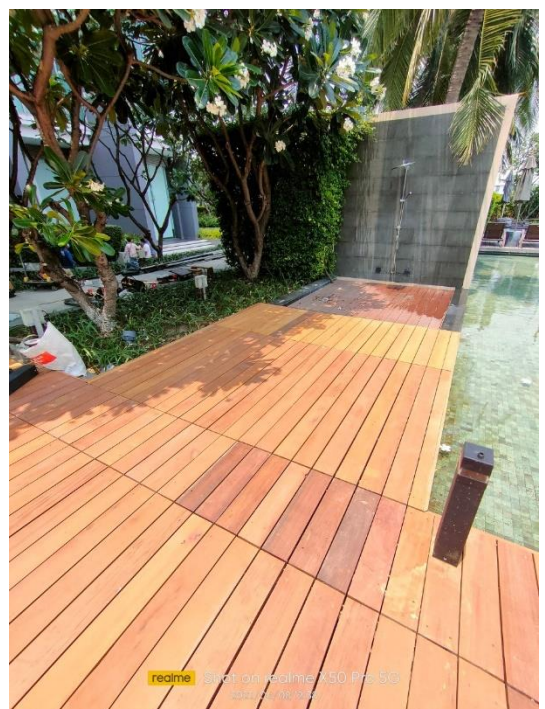
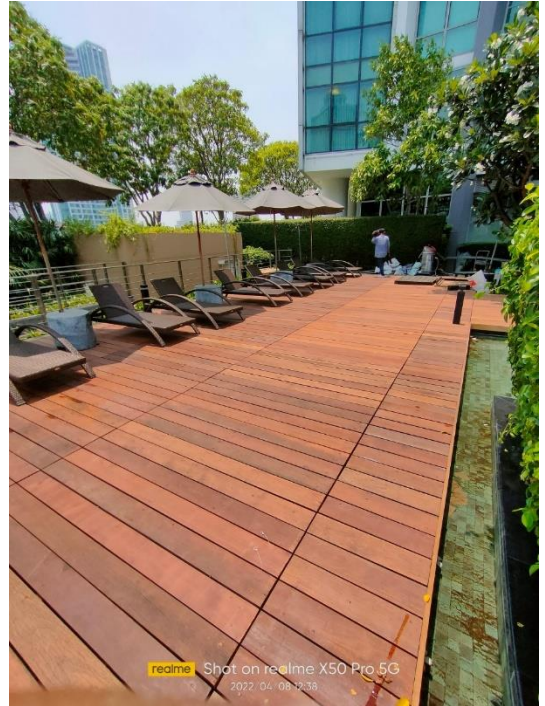
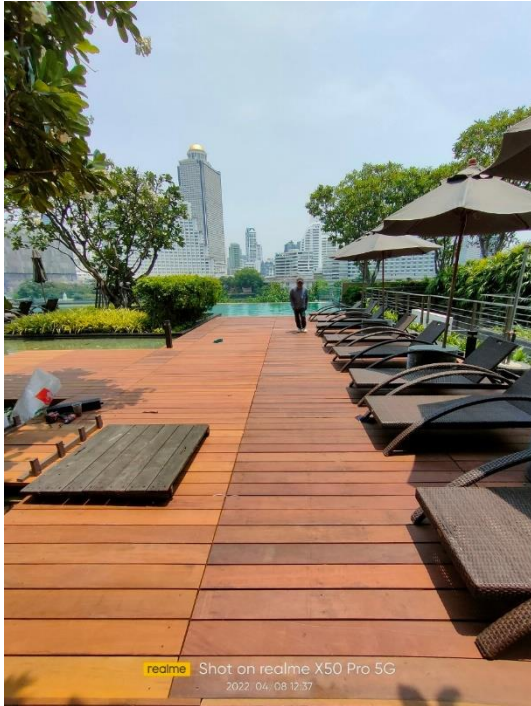
Replacement of wooden support and wood plank refurbishment (WT1)
River Pool
The River Condominium

Zone 1



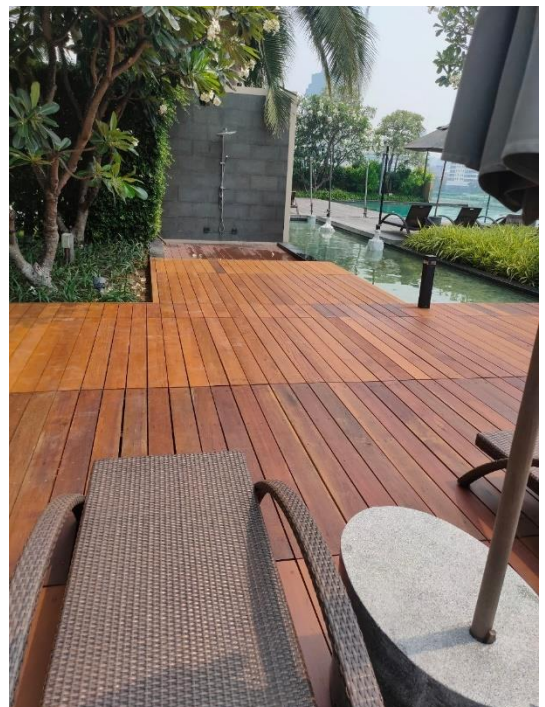
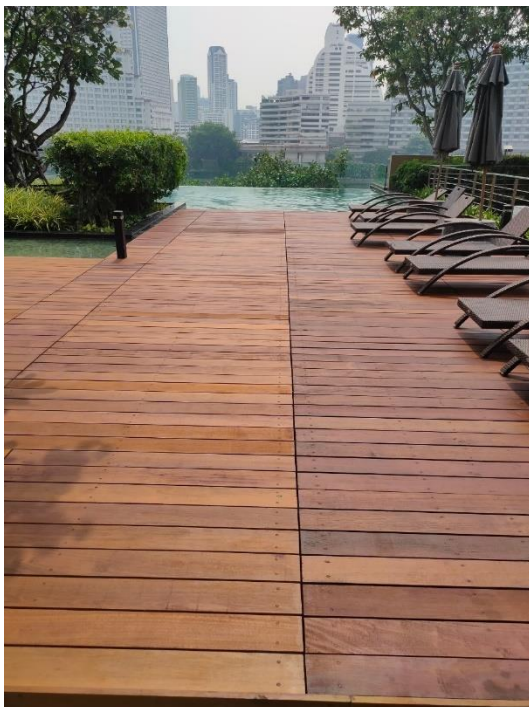
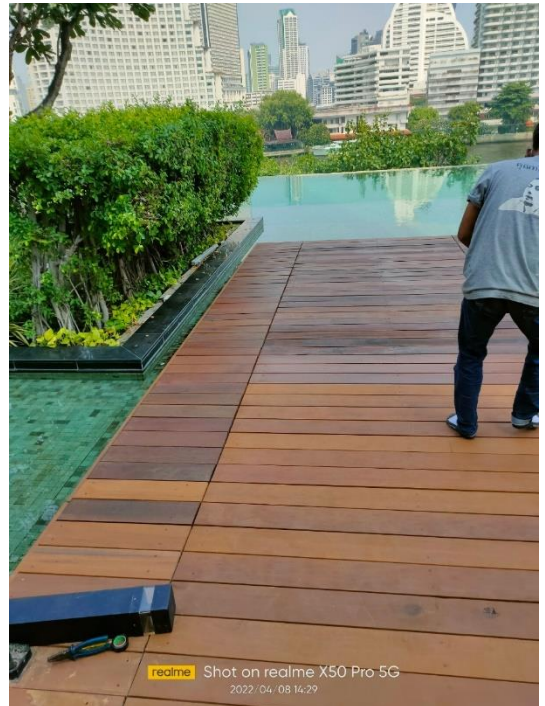
Replacement of wooden support and wood plank refurbishment (WT1)
River Pool
The River Condominium

Zone 1



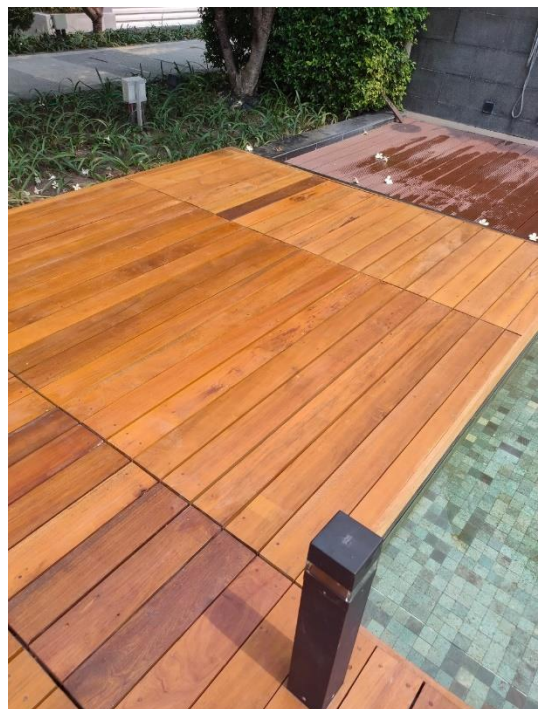
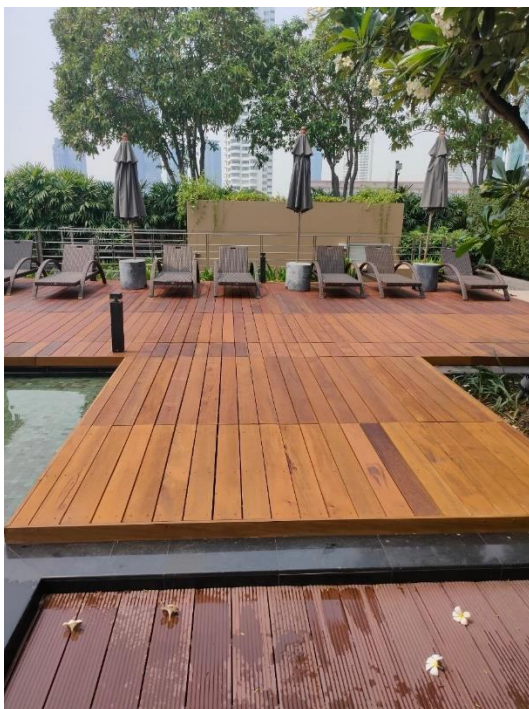
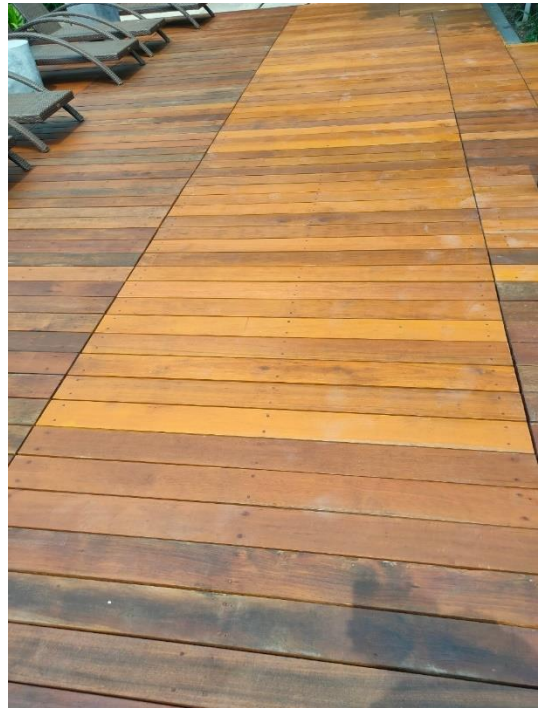
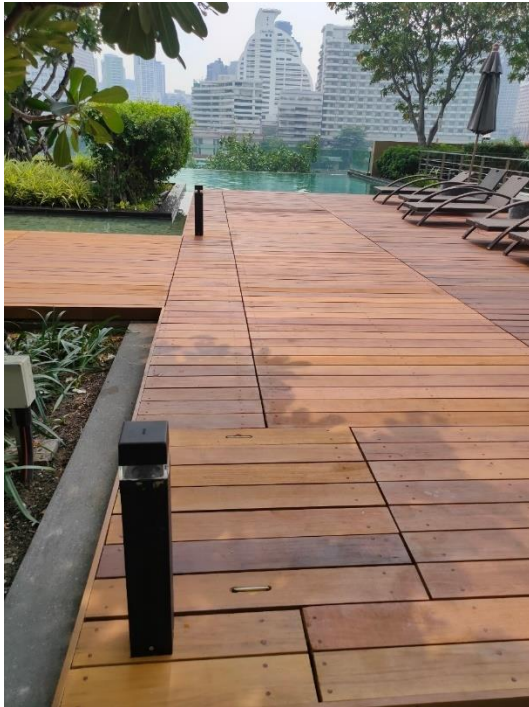
Replacement of wooden support and wood plank refurbishment (WT1)
River Pool
The River Condominium

Zone 1



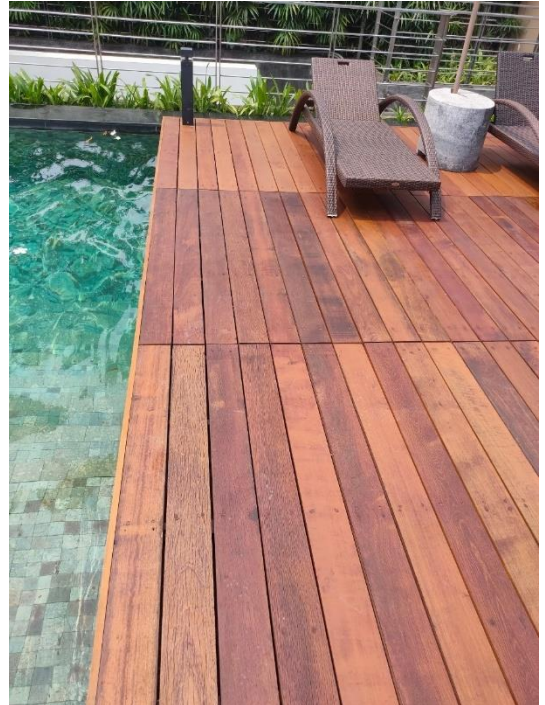
Replacement of wooden support and wood plank refurbishment (WT1)
River Pool
The River Condominium

Zone 1



Replacement of wooden support and wood plank refurbishment (WT1)
River Pool
The River Condominium

Zone 1



ปริมาณไม้ใหม่ที่ใช้ใน Zone 1

1. แผ่นไม้ตะเคียนทองขนาด 6" หนา 32มม. ยาว 1.80 เมตร จำนวน 167 แผ่น
2. แผ่นไม้ตะเคียนทองขนาด 6" หนา 32มม. ยาว 1.50 เมตร จำนวน 7 แผ่น
3. แผ่นไม้ตะเคียนทองขนาด 6" หนา 32มม. ยาว 1.20 เมตร จำนวน 29 แผ่น
4. แผ่นไม้ตะเคียนทองขนาด 6" หนา 32มม. ยาว 0.60 เมตร จำนวน 40 แผ่น
5. แผ่นไม้ตะเคียนทองขนาด 6" หนา 25มม. ยาว 2.50 เมตร จำนวน 17 แผ่น

*** รายการที่ 3 และ 4 เป็นการนำไม้ขนาด 1.80 เมตร มาตัดแบ่ง ซึ่งจะเทียบเท่าการใช้ ไม้ยาว 1.80 เมตร จำนวน 33 แผ่น

รวมใช้

ไม้ หนา 32มม. ยาว 1.80 เมตร 207 แผ่น

ไม้ หนา 25มม. ยาว 2.50 เมตร 17 แผ่น

Replacement of wooden support and wood plank refurbishment (WT1)
River Pool
The River Condominium

Zone 2



Replacement of wooden support and wood plank refurbishment (WT1)
River Pool
The River Condominium

Zone 2



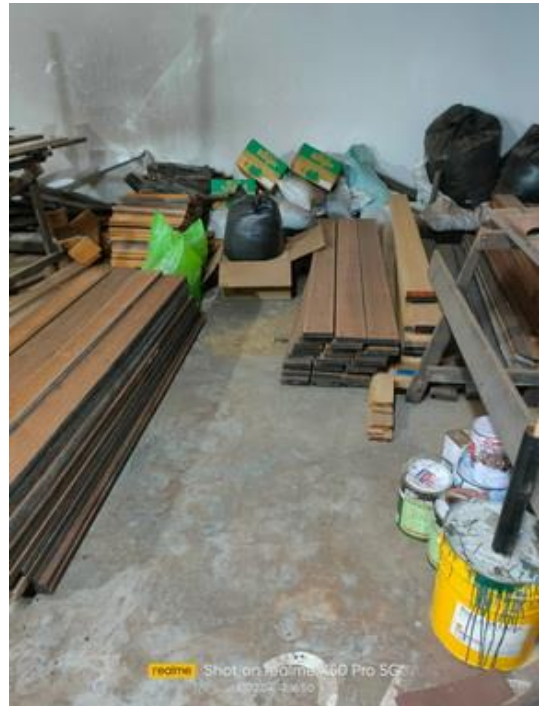
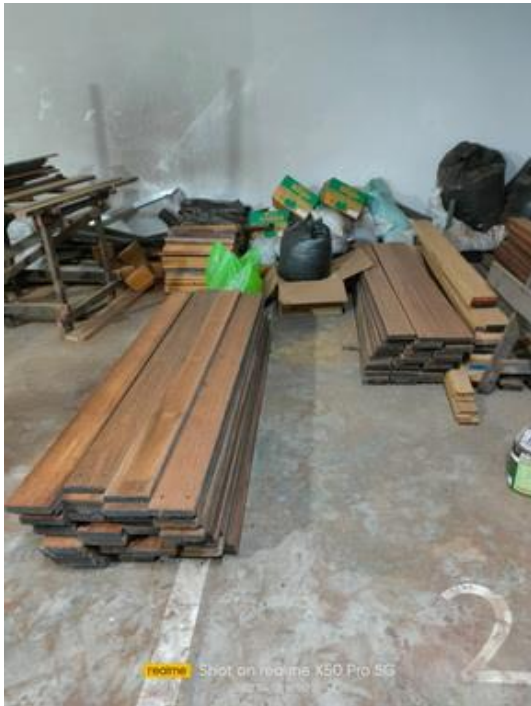
Replacement of wooden support and wood plank refurbishment (WT1)
River Pool
The River Condominium

Zone 2



Replacement of wooden support and wood plank refurbishment (WT1)
River Pool
The River Condominium

Zone 2



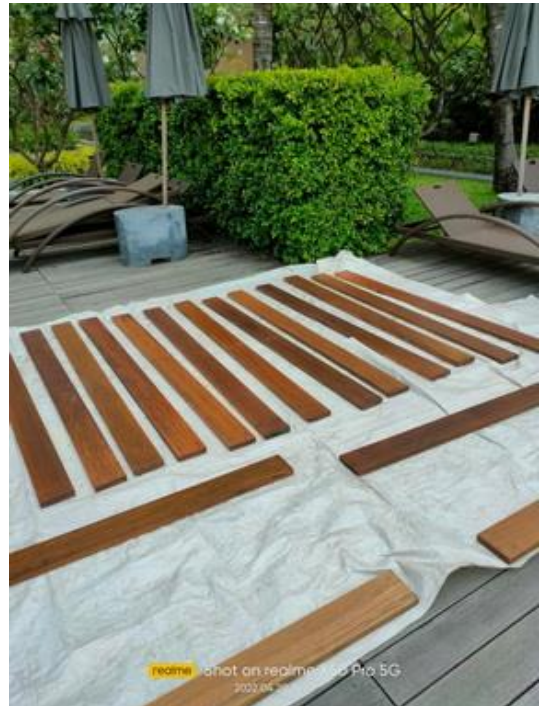
Replacement of wooden support and wood plank refurbishment (WT1)
River Pool
The River Condominium

Zone 2



Replacement of wooden support and wood plank refurbishment (WT1)
River Pool
The River Condominium

Zone 2



Replacement of wooden support and wood plank refurbishment (WT1)
River Pool
The River Condominium

Zone 2



Replacement of wooden support and wood plank refurbishment (WT1)
River Pool
The River Condominium

Zone 2



Replacement of wooden support and wood plank refurbishment (WT1)
River Pool
The River Condominium

Zone 2



Replacement of wooden support and wood plank refurbishment (WT1)
River Pool
The River Condominium

Zone 2



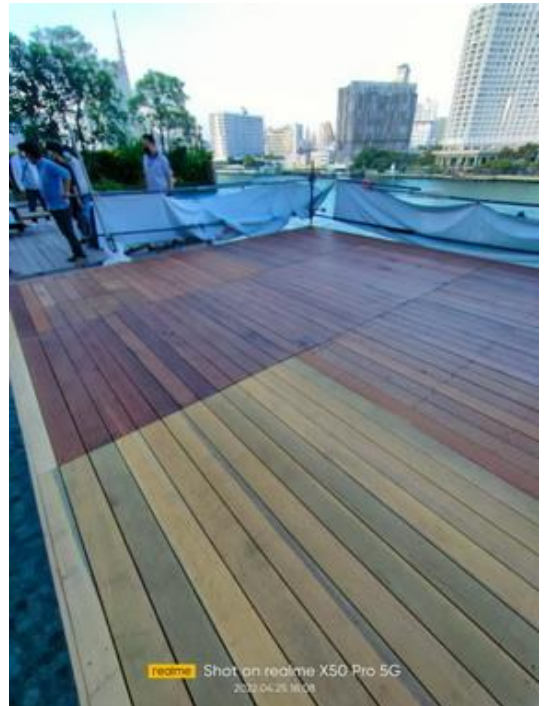
Replacement of wooden support and wood plank refurbishment (WT1)
River Pool
The River Condominium

Zone 2



Replacement of wooden support and wood plank refurbishment (WT1)
River Pool
The River Condominium

Zone 2



ปริมาณไม้ใหม่ที่ใช้ใน Zone 2

1. แผ่นไม้ตะเคียนทองขนาด 6" หนา 32มม. ยาว 2.00 เมตร จำนวน 32 แผ่น
2. แผ่นไม้ตะเคียนทองขนาด 6" หนา 25มม. ยาว 2.50 เมตร จำนวน 11 แผ่น